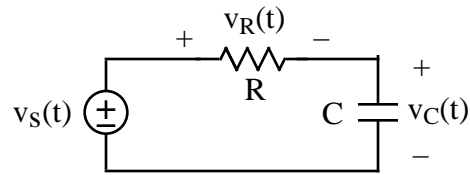


ECE 405 - INVEST 1 - REVIEW OF FREQUENCY RESPONSE

1. How the steady state response of a linear circuit to a sinusoid is special
2. What we mean by the frequency response of a linear circuit
3. Steady state analysis of the following circuit



- a. Sketch of $|G_C(jf)| = |V_C(jf)/V_S|$ as a function of frequency
- b. Why $|G_C(jf)|$ decreases as f increases
- c. Filter type of $|G_C(jf)|$